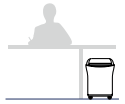


KOBRA 240 SS5

CLASSIC LINE SHREDDER
PERSONAL USE AND SMALL/MEDIUM OFFICES

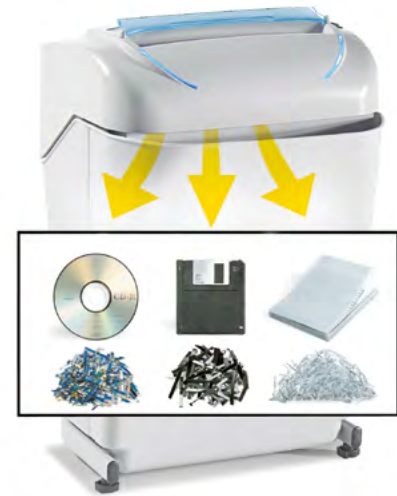
Manufacturer: ELCOMAN srl
Brand: KOBRA
Model: KOBRA 240 SS5
Article Code: 99.721
EAN Code: 8 026064 997218



Throat width:	240 mm
Shred size:	5,8 mm straight cut
Security level ISO/IEC 21964 (DIN 66399):	P-2 O-2 T-2 E-2
Paper capacity* (sheets at a time):	27-29 sheets (A4 70gr) / 22-24 sheets (A4 80gr)
Shreddable materials:	Paper, Credit cards, Credit cards with chip, CDs/ DVDs, Floppy-disks
Waste bin capacity:	35 litres
Speed:	0,09 m/sec
Noise level:	54/55 dB(A)
Voltage:	230 Volt
Power:	460 Watt
Dimensions (WxDxH):	37 x 33 x 56 cm
Weight (net/gross):	15/16 Kg – Packaging: 1 unit per box

Datasheet n.23 rev.1

* Capacity varies based on supply power, weight, quality and grain of paper, operating temperature and blade lubrication.



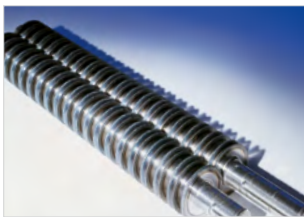
Certifications:  CB CE

MAIN FEATURES

Straight-cut shredder equipped with heavy duty chain drive system with metal gears. Carbon hardened cutting knives unaffected by staples and clips. Motor thermal protection: 24 hour continuous duty operations without overheating or duty cycles.

Kobra 240 SS5 can shred up to 29 sheets at a time, CDs/DVDs, credit cards and floppy-disks. Energy Smart System with optical illuminated indicators for power saving stand-by mode and environmental protection. Equipped with a removable waste bin for easy empty operations, does not require lifting of the cutting head.

- **Super Potential Power Unit:** heavy duty chain drive system with steel gears
- **Continuous duty shredding:** 24 hour continuous duty motor without overheating and duty cycles. Motor thermal protection.
- **Carbon hardened steel cutting knives** unaffected by staples and clips
- **Energy Smart System:** power saving stand-by mode with optical illuminated indicators
- **Oil-free System:** no need of lubrication and maintenance of cutting knives
- **Start & Stop:** automatic start and stop through electronic eyes with stand-by function
- **Safety Stop:** automatically stops at bin removal
- **35 litre removable waste bin** for easy empty operations: does not require lifting the cutting head. Equipped with a mechanism to separate shredded paper from plastic shreds.
- **Eco-friendly:** does not require plastic bags.



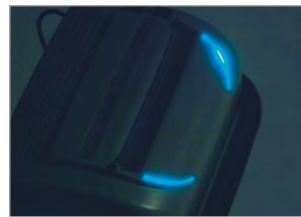
24 HOUR CONTINUOUS DUTY MOTOR

Motor thermal protection. Continuous duty motor, no overheating and no duty cycles. Carbon hardened steel cutting knives unaffected by staples and clips.



SUPER POTENTIAL POWER UNIT

Heavy duty chain drive with steel gears which offer reliability and resistance to wear.



ENERGY SMART SYSTEM

Optical illuminated indicators for power saving stand-by mode.



REMOVABLE WASTE BIN

for easy empty operations: does not require lifting the cutting head. Equipped with a mechanism to separate shredded paper from plastic shreds.

